



LEGEND

- Construction footprint
- Proposed water alignment
- Proposed wastewater alignment

Buildings

- Residential
- Commercial
- Industrial

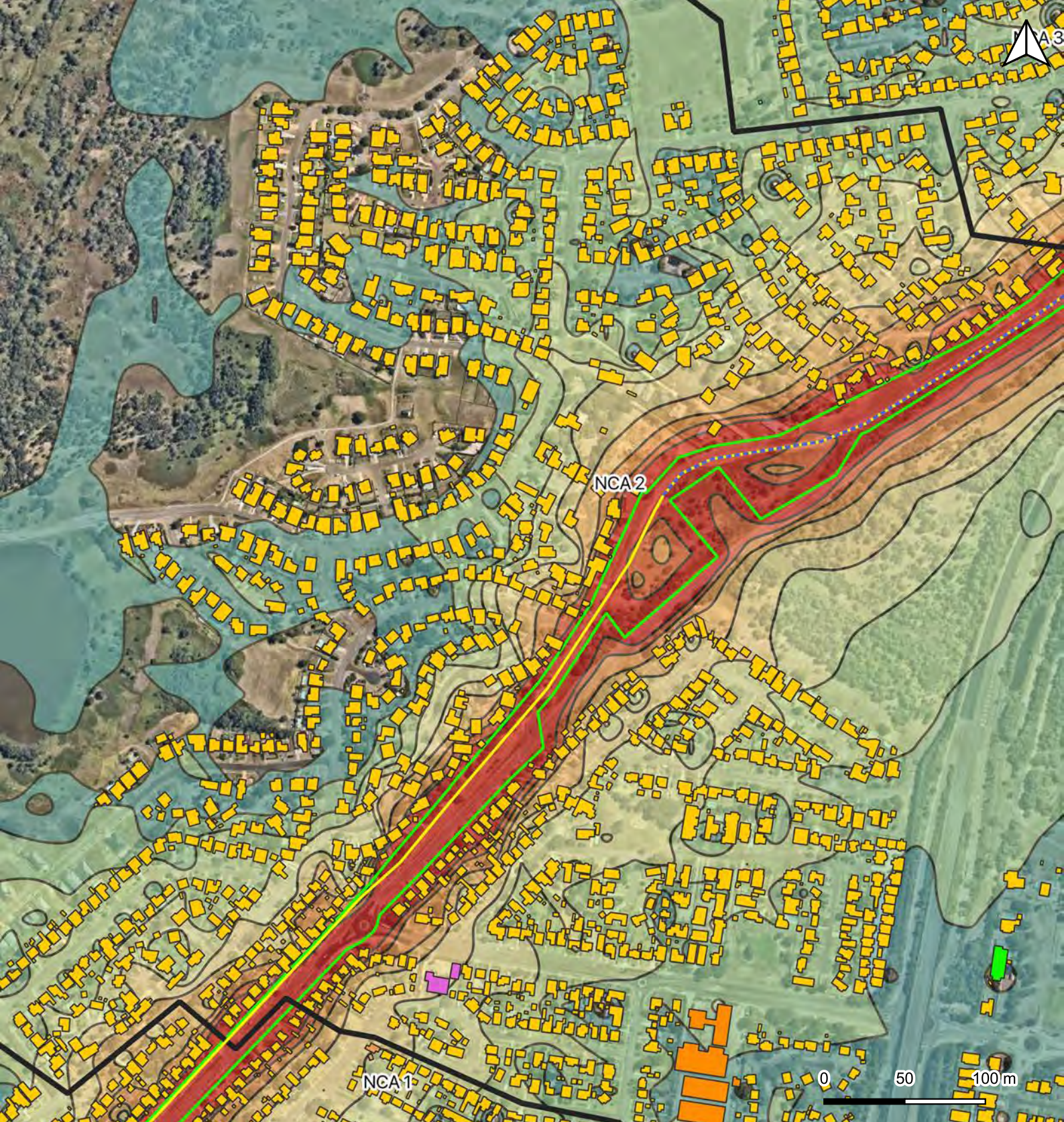
Typical worst case construction
noise, LAeq, 15min with SWL 116dB(A)
Stage 1, 4

- >85
- 80 - 85
- 75 - 80
- 70 - 75
- 65 - 70

- 60 - 65
- 55 - 60
- 50 - 55
- 45 - 50

Client: Arcadis
Drawn by : MSC
Checked by: AP
Dated: August 2019
Page size: A4

Page 3 of 6



LEGEND

- Construction footprint
- Proposed water alignment
- Proposed wastewater alignment

Buildings

- Residential
- Industrial
- Recreational/Open Space
- Places of worship

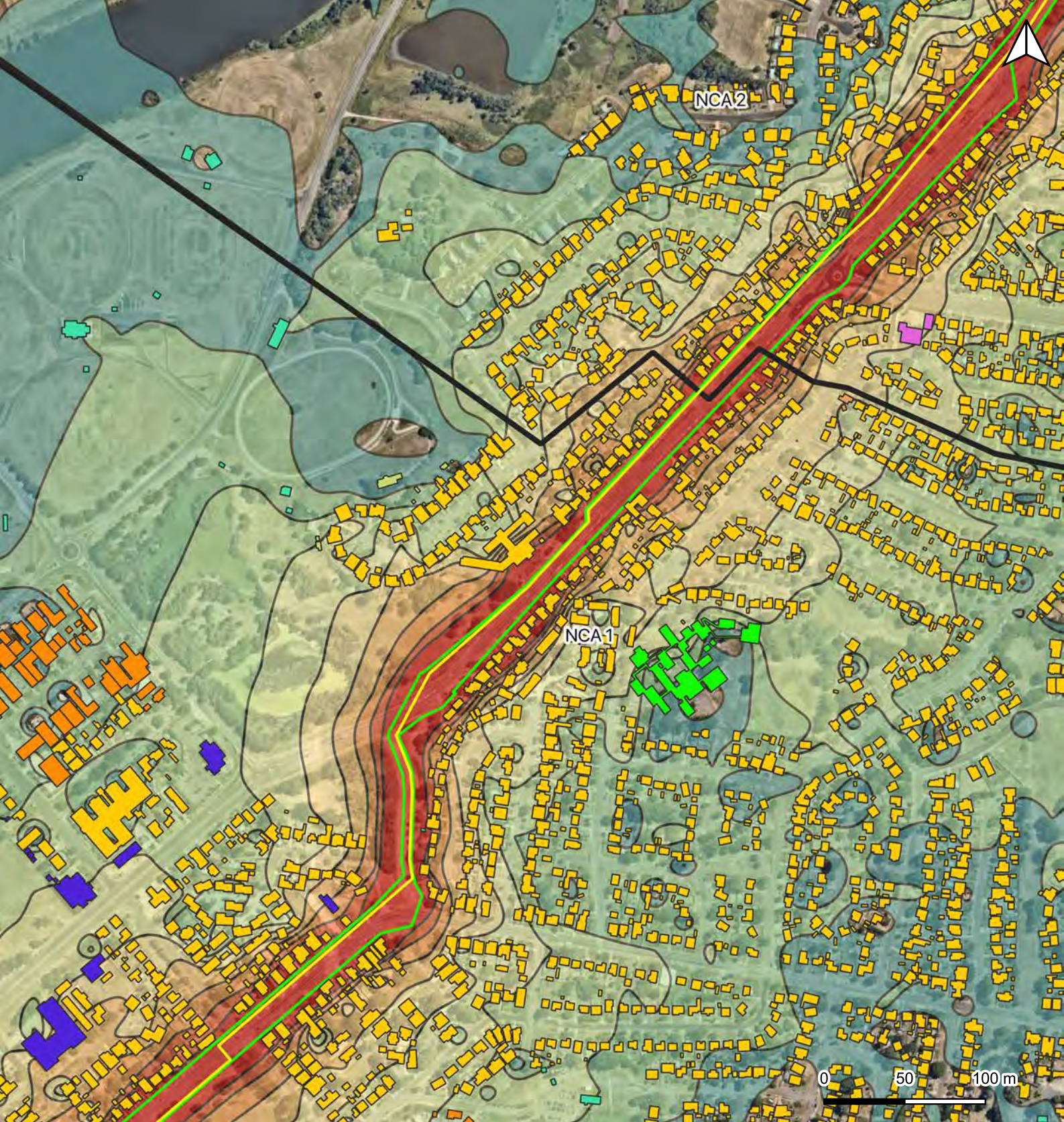
Typical worst case construction
noise, LAeq, 15min with SWL 116dB(A)
Stage 1, 4

- >85
- 80 - 85
- 75 - 80
- 70 - 75
- 65 - 70

- 60 - 65
- 55 - 60
- 50 - 55
- 45 - 50

Client: Arcadis
Drawn by : MSC
Checked by: AP
Dated: August 2019
Page size: A4

Page 4 of 6



LEGEND

- Construction footprint
- Proposed water alignment

Buildings

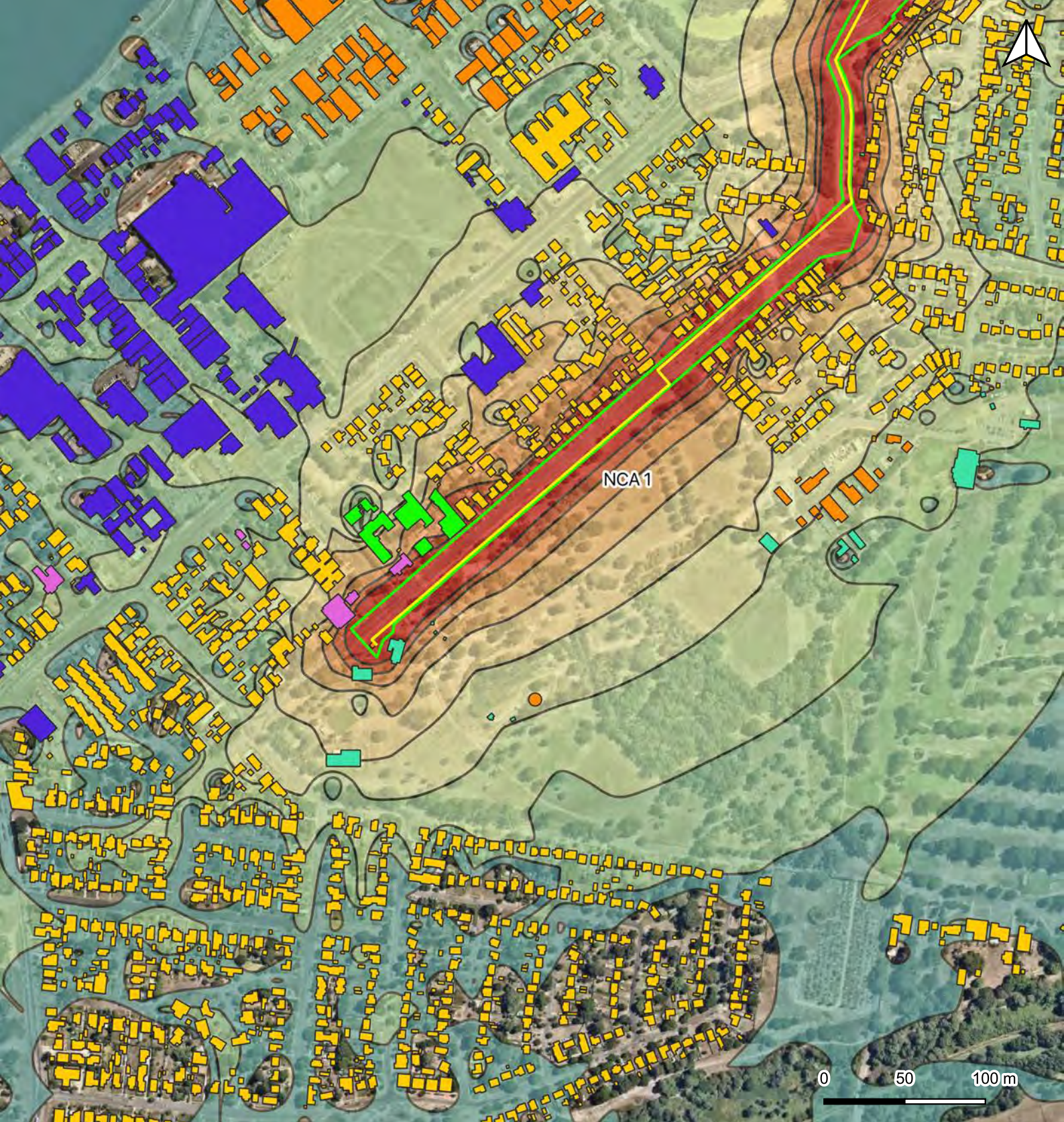
- Residential
- Commercial
- Industrial
- Education
- Recreational/Open Space
- Places of worship

Typical worst case construction
noise, LAeq, 15min with SWL 116dB(A)
Stage 1, 4

 >85	 60 - 65
 80 - 85	 55 - 60
 75 - 80	 50 - 55
 70 - 75	 45 - 50
 65 - 70	

Client: Arcadis
Drawn by : MSC
Checked by: AP
Dated: August 2019
Page size: A4

Page 5 of 6



LEGEND

- Construction footprint
- Proposed water alignment

Buildings

- Residential
- Commercial
- Industrial
- Education
- Recreational/Open Space
- Places of worship

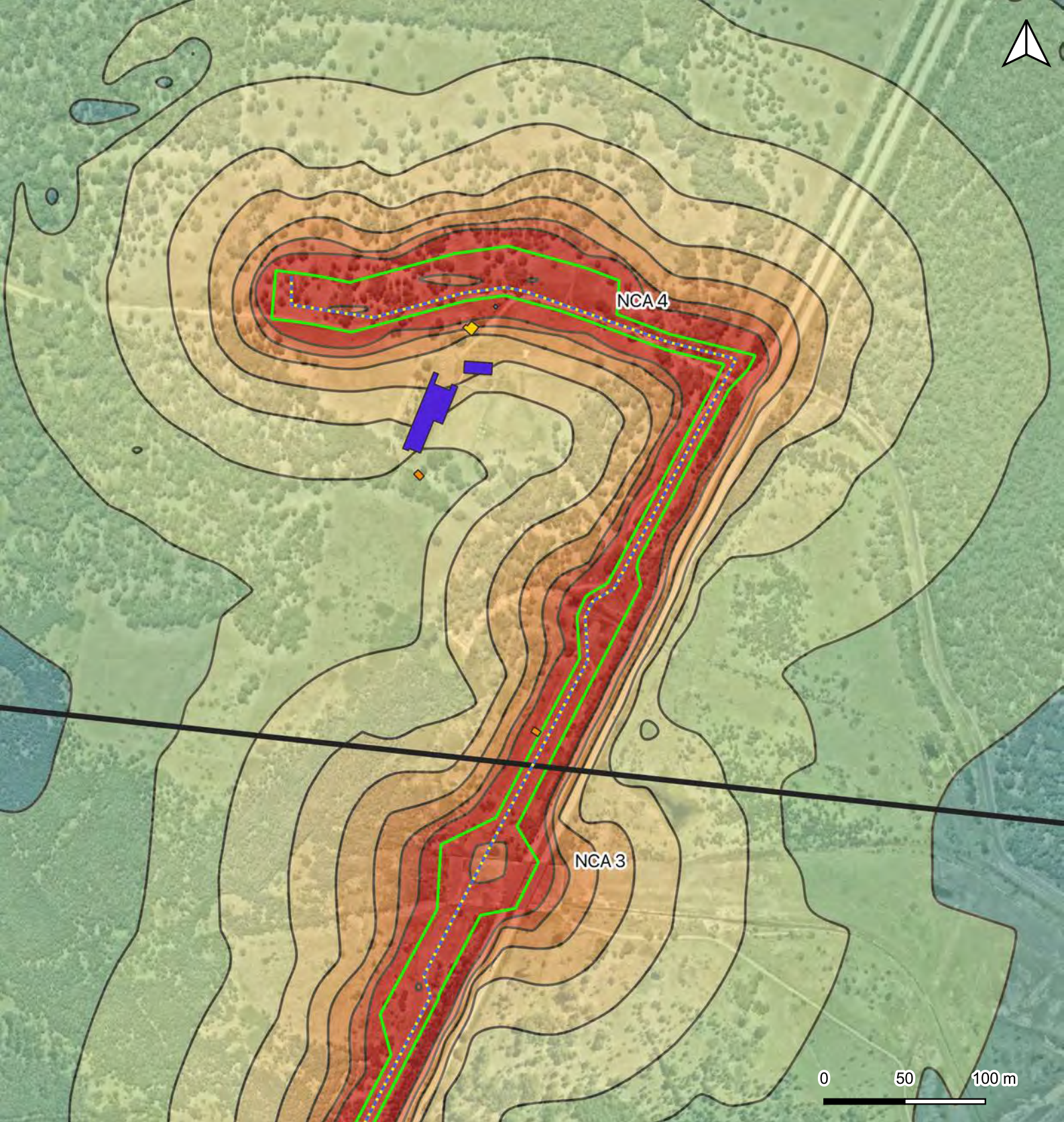
Typical worst case construction
noise, LAeq, 15min with SWL 116dB(A)
Stage 1, 4

- >85
- 80 - 85
- 75 - 80
- 70 - 75
- 65 - 70

- 60 - 65
- 55 - 60
- 50 - 55
- 45 - 50

Client: Arcadis
Drawn by : MSC
Checked by: AP
Dated: August 2019
Page size: A4

Page 6 of 6



LEGEND

- Construction footprint
- Proposed water alignment
- Proposed wastewater alignment

Buildings

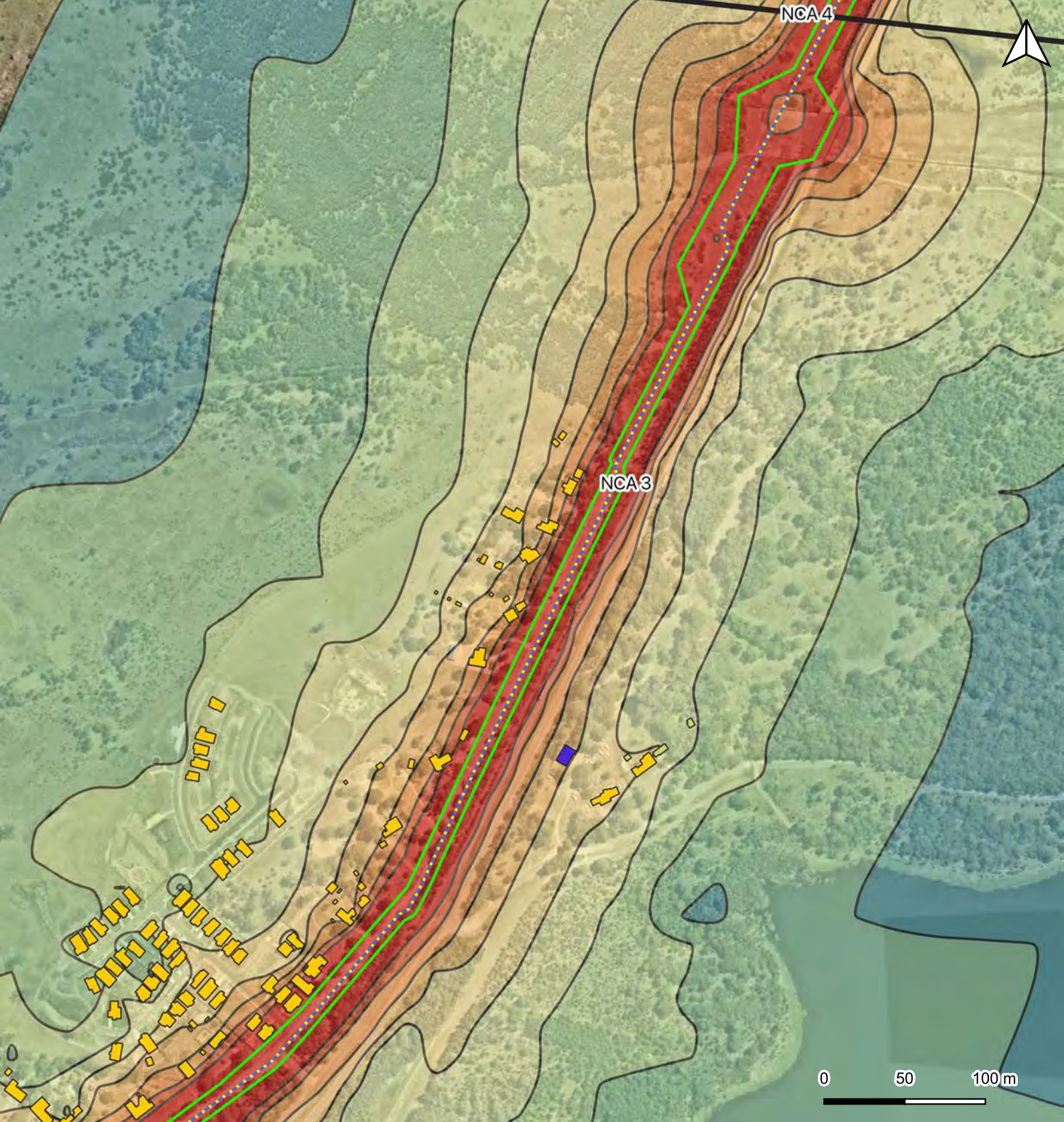
- Residential
- Commercial
- Industrial

Typical worst case construction
noise, LAeq, 15min with SWL 119dB(A)
Stage 2, 3, 5, 7

 >85	 60 - 65
 80 - 85	 55 - 60
 75 - 80	 50 - 55
 70 - 75	 45 - 50
 65 - 70	

Client: Arcadis
Drawn by : MSC
Checked by: AP
Dated: August 2019
Page size: A4

Page 1 of 6



LEGEND

- Construction footprint
- Proposed water alignment
- Proposed wastewater alignment

Buildings

- Residential
- Commercial

Typical worst case construction
noise, LAeq, 15min with SWL 119dB(A)
Stage 2, 3, 5, 7

>85

80 - 85

75 - 80

70 - 75

65 - 70

60 - 65

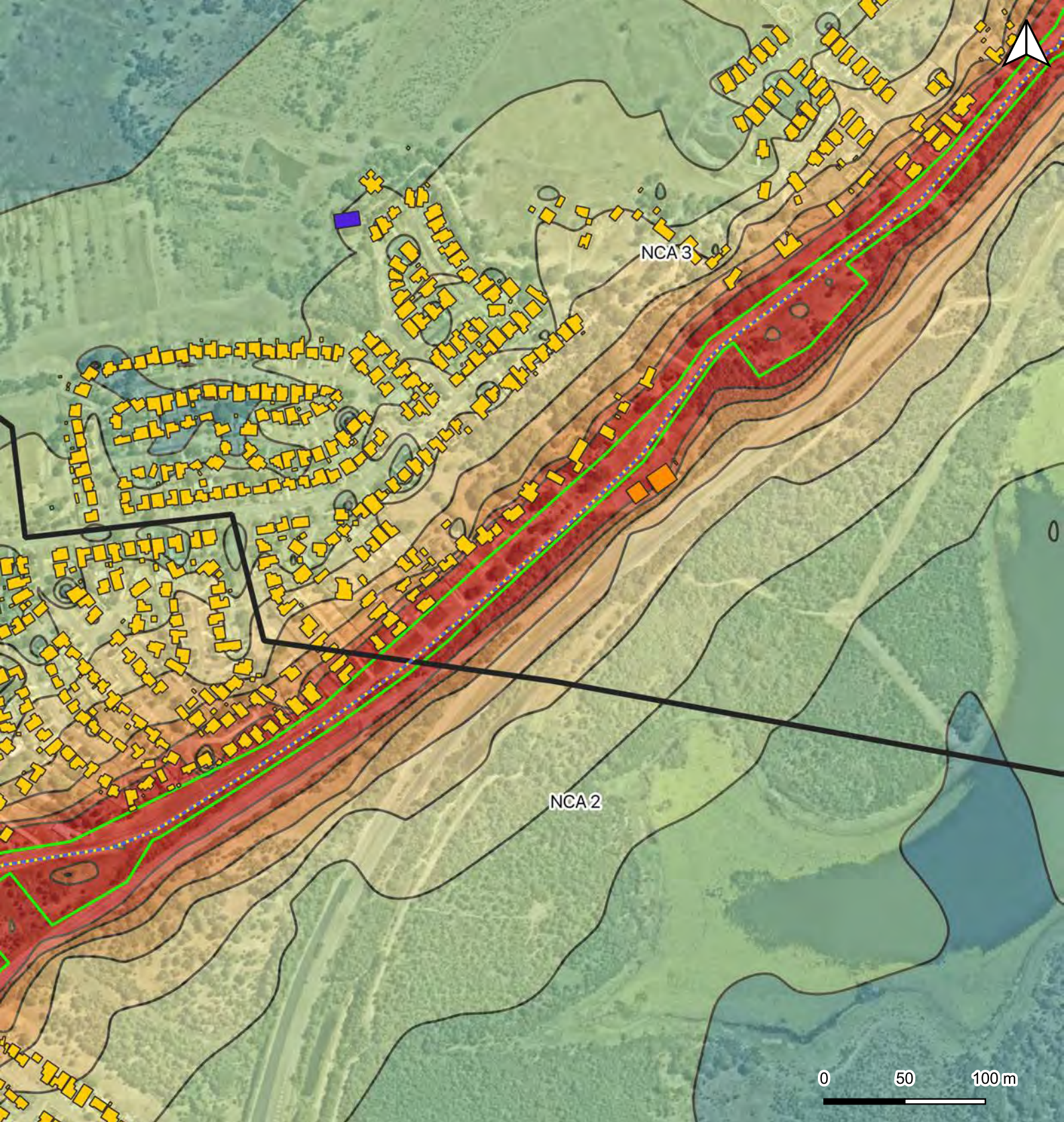
55 - 60

50 - 55

45 - 50

Client: Arcadis
Drawn by : MSC
Checked by: AP
Dated: August 2019
Page size: A4

Page 2 of 6



LEGEND

- Construction footprint
- Proposed water alignment
- - - Proposed wastewater alignment

Buildings

- Residential
- Commercial
- Industrial

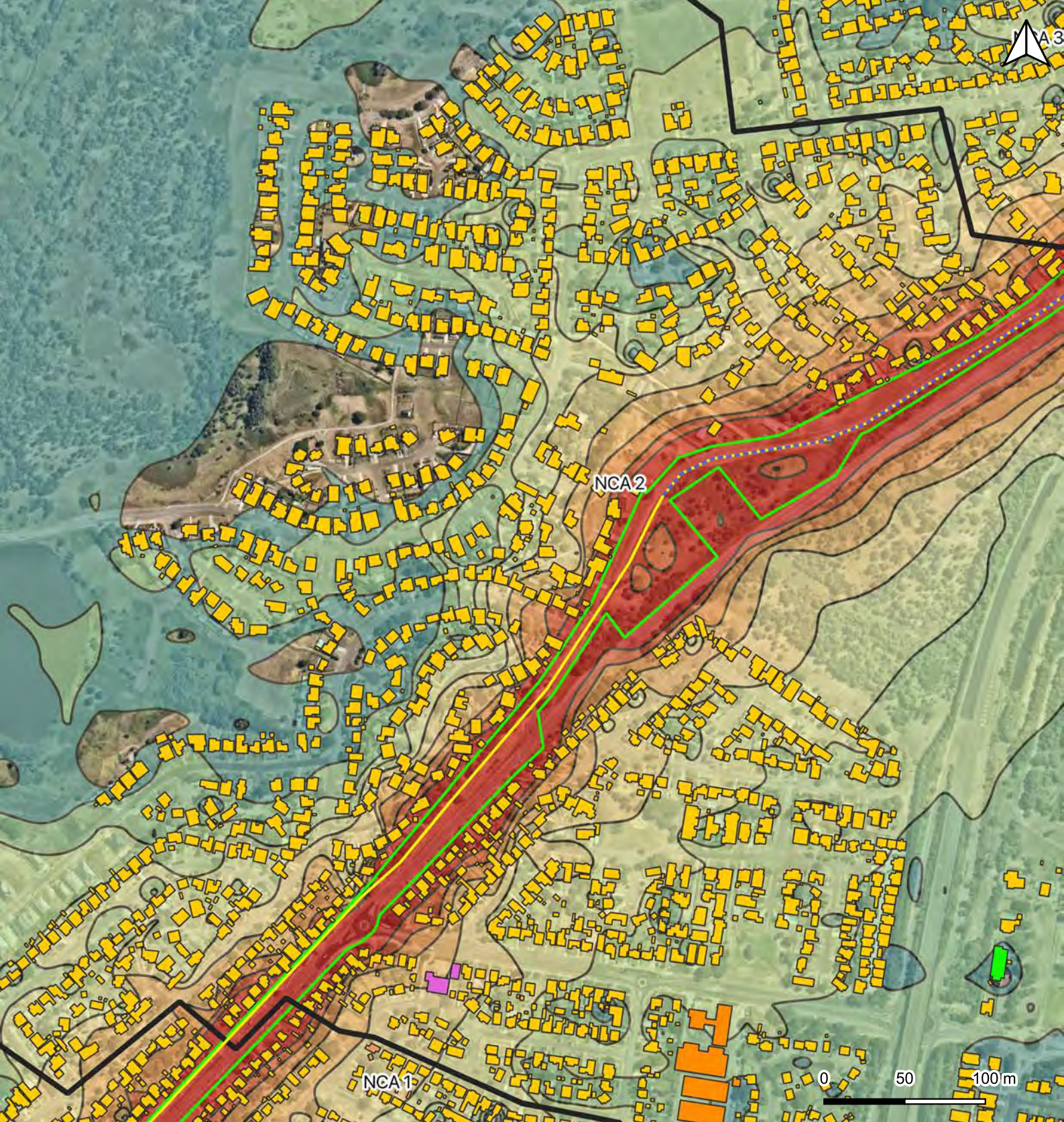
Typical worst case construction
noise, LAeq, 15min with SWL 119dB(A)
Stage 2, 3, 5, 7

- >85
- 80 - 85
- 75 - 80
- 70 - 75
- 65 - 70

- 60 - 65
- 55 - 60
- 50 - 55
- 45 - 50

Client: Arcadis
Drawn by : MSC
Checked by: AP
Dated: August 2019
Page size: A4

Page 3 of 6



LEGEND

- Construction footprint
- Proposed water alignment
- Proposed wastewater alignment

Buildings

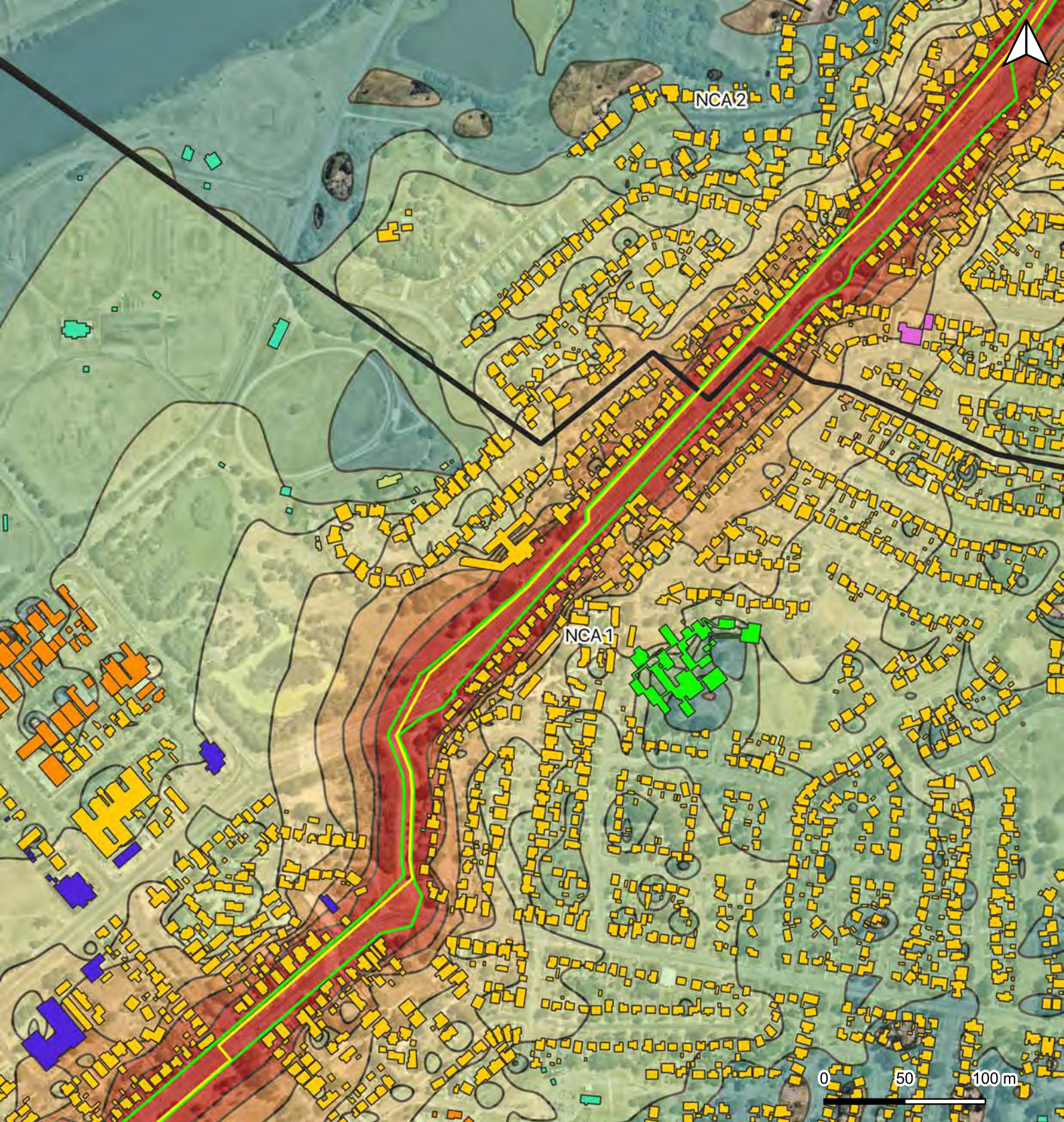
- Residential
- Industrial
- Recreational/Open Space
- Places of worship

Typical worst case construction
noise, LAeq, 15min with SWL 119dB(A)
Stage 2, 3, 5, 7

	>85		60 - 65
	80 - 85		55 - 60
	75 - 80		50 - 55
	70 - 75		45 - 50
	65 - 70		

Client: Arcadis
Drawn by : MSC
Checked by: AP
Dated: August 2019
Page size: A4

Page 4 of 6



LEGEND

- Construction footprint
- Proposed water alignment

Buildings

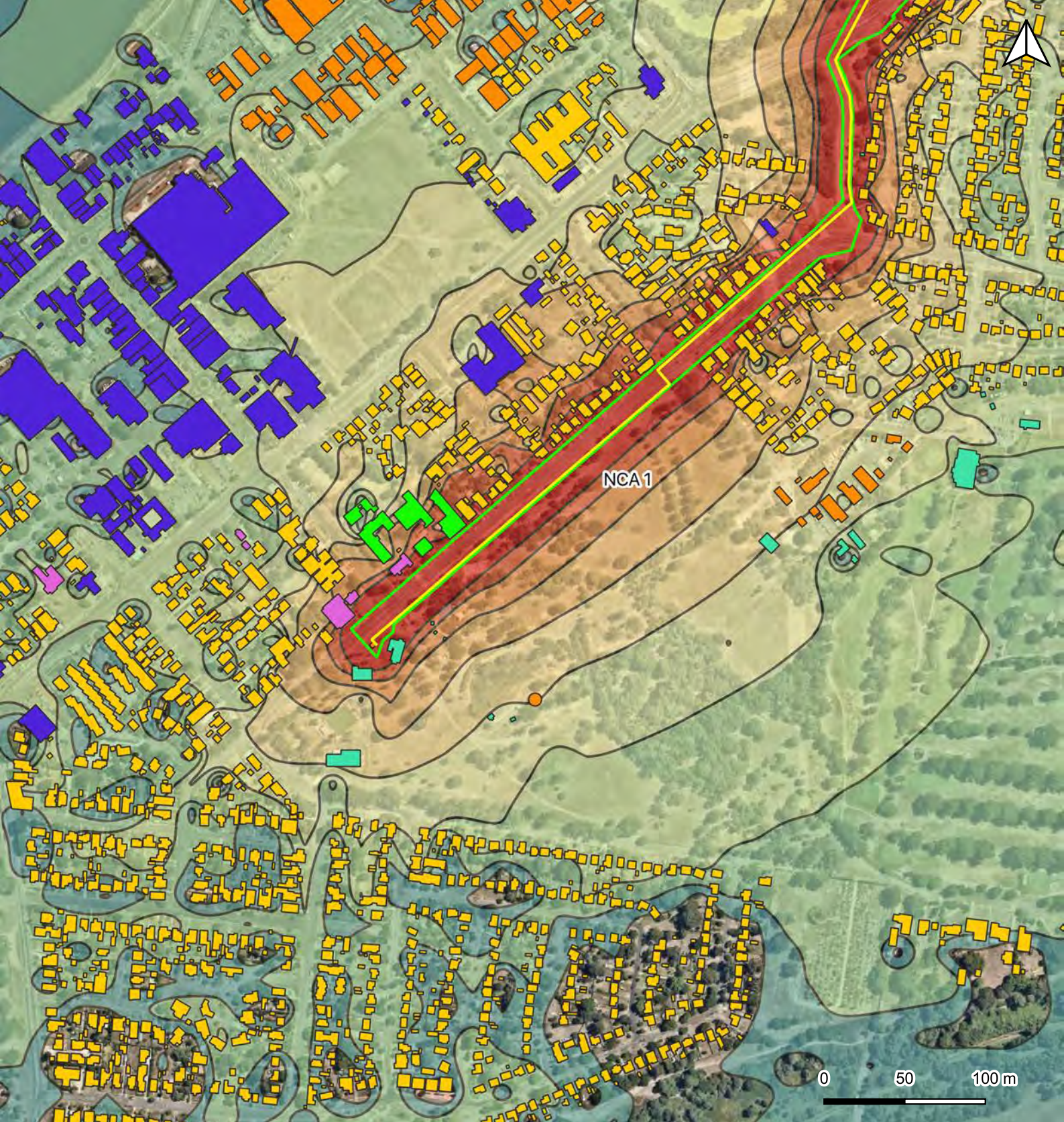
- Residential
- Commercial
- Industrial
- Education
- Recreational/Open Space
- Places of worship

Typical worst case construction
noise, LAeq, 15min with SWL 119dB(A)
Stage 2, 3, 5, 7

	>85		60 - 65
	80 - 85		55 - 60
	75 - 80		50 - 55
	70 - 75		45 - 50
	65 - 70		

Client: Arcadis
Drawn by : MSC
Checked by: AP
Dated: August 2019
Page size: A4

Page 5 of 6



LEGEND

- Construction footprint
- Proposed water alignment

Buildings

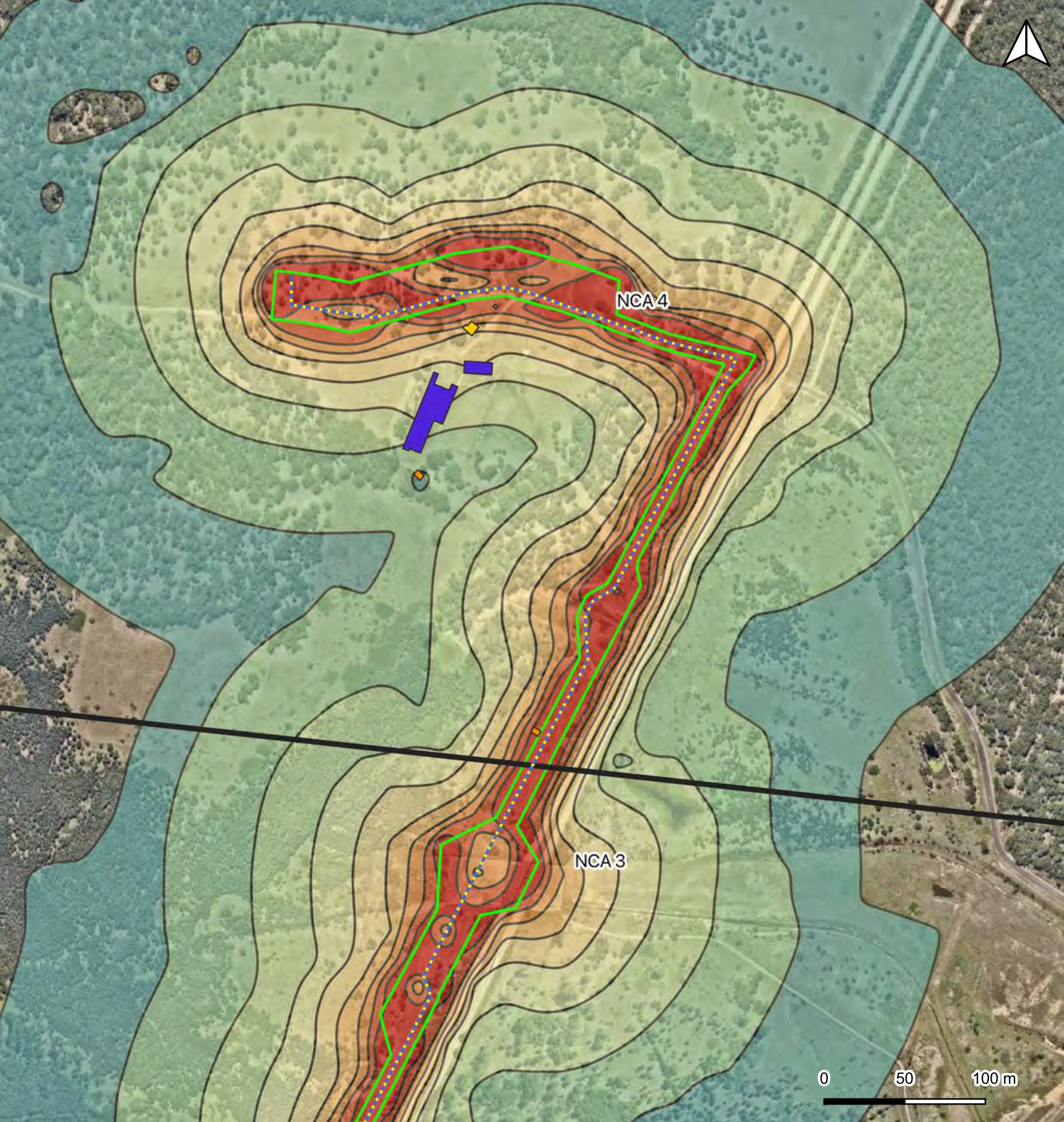
- Residential
- Commercial
- Industrial
- Education
- Recreational/Open Space
- Places of worship

Typical worst case construction
noise, LAeq, 15min with SWL 119dB(A)
Stage 2, 3, 5, 7

 >85	 60 - 65
 80 - 85	 55 - 60
 75 - 80	 50 - 55
 70 - 75	 45 - 50
 65 - 70	

Client: Arcadis
Drawn by : MSC
Checked by: AP
Dated: August 2019
Page size: A4

Page 6 of 6



LEGEND

- Construction footprint
- Proposed water alignment
- Proposed wastewater alignment

Buildings

- Residential
- Commercial
- Industrial

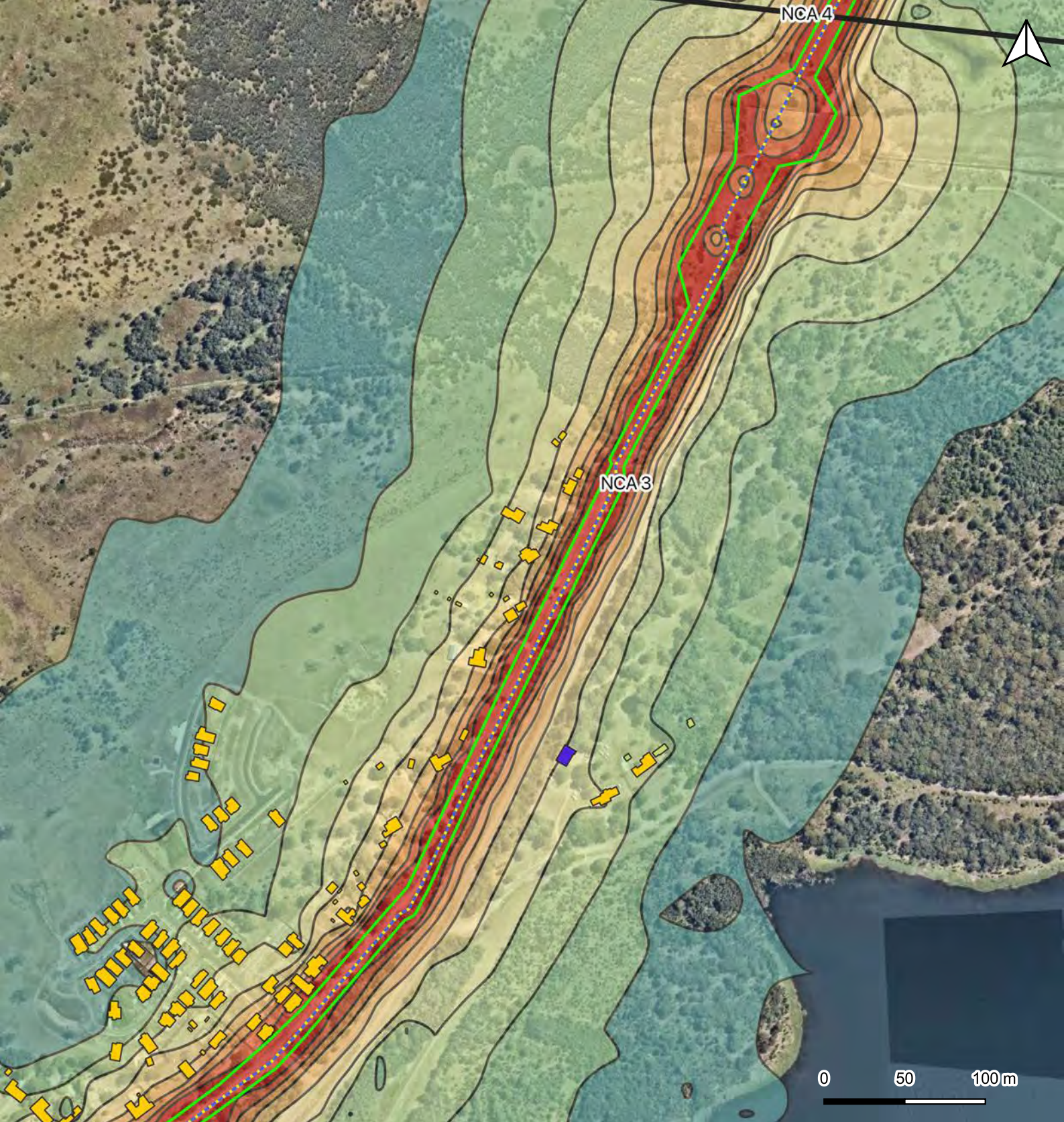
Typical worst case construction
noise, LAeq, 15min with SWL 112dB(A)
Stage 6

- >85
- 80 - 85
- 75 - 80
- 70 - 75
- 65 - 70

- 60 - 65
- 55 - 60
- 50 - 55
- 45 - 50

Client: Arcadis
Drawn by : MSC
Checked by: AP
Dated: August 2019
Page size: A4

Page 1 of 6



LEGEND

- Construction footprint
- Proposed water alignment
- - - Proposed wastewater alignment

Buildings

- Residential
- Commercial

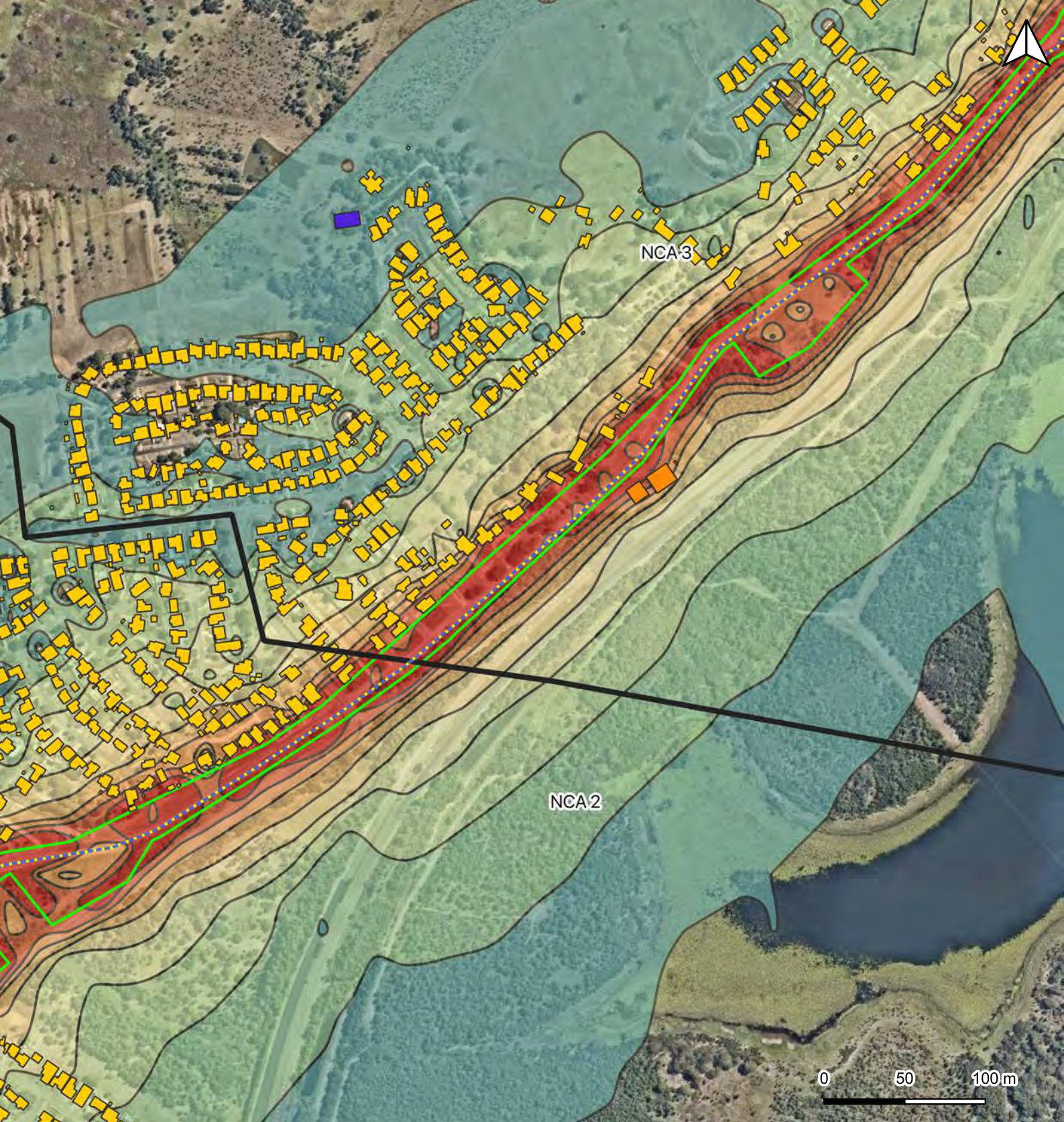
Typical worst case construction
noise, LAeq, 15min with SWL 112dB(A)
Stage 6

- >85
- 80 - 85
- 75 - 80
- 70 - 75
- 65 - 70

- 60 - 65
- 55 - 60
- 50 - 55
- 45 - 50

Client: Arcadis
Drawn by : MSC
Checked by: AP
Dated: August 2019
Page size: A4

Page 2 of 6



LEGEND

- Construction footprint
- Proposed water alignment
- Proposed wastewater alignment

Buildings

- Residential
- Commercial
- Industrial

Typical worst case construction
noise, LAeq, 15min with SWL 112dB(A)
Stage 6

- >85
- 80 - 85
- 75 - 80
- 70 - 75
- 65 - 70

- 60 - 65
- 55 - 60
- 50 - 55
- 45 - 50

Client: Arcadis
Drawn by : MSC
Checked by: AP
Dated: August 2019
Page size: A4

Page 3 of 6